

Electronic Updates (EU) Guide

Updating Remote Applications

1. Introduction

The purpose of this document is to guide an administrator of QAS products through installing and configuring the Electronic Updates (EU) platform in a single location environment.

2. What is EU?

EU enables the automatic download and installation of reference data used by the QAS Pro, QAS Pro Web and QAS Batch applications. As soon as a new dataset is available it is downloaded to your environment and the configured QAS applications are updated without human interaction. Your administrator will be notified via email of update related activities.

3. Architecture and Setup Options

The EU client can be installed on the same machine as a single install of QAS or in a central location where multiple QAS installations are installed. Data will be downloaded from the EU server via HTTPS and all configured QAS application will be automatically updated to use that data moving forward.

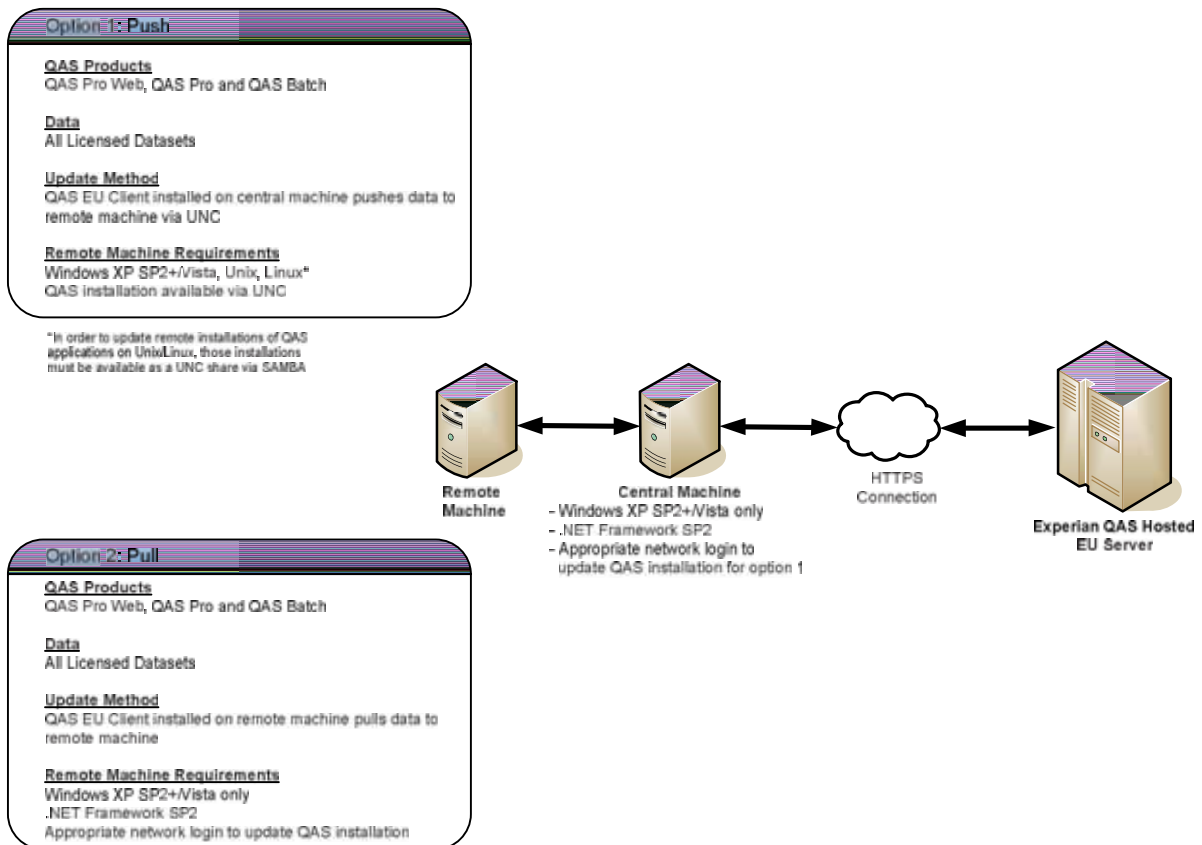


Fig 1. EU Client Architecture

4. Prerequisites

To install the EU Client you will need the following:

- A licensed copy of QAS Pro Web, QAS Pro or QAS Batch to update
- An EU username and password. Login details will be emailed to the nominated update contact. If you have any issues obtaining an EU login please email us.euadmin@qas.com
- A network login with appropriate privileges to update your QAS application. This login should have a password that never expires to enable EU to run indefinitely.
- A machine running MS Windows XP or higher to host the EU client program.

NOTE: the .NET Framework 3.5 package will be installed as part of the setup and a reboot of the target system will be required.

5. Installation Instructions

5.1 Download the appropriate EU Client installer

- With .NET Framework- <ftp://ftp.usa.qas.com/Product/EU-with-dotnet-setup.zip> (244MB)
- Without .NET Framework - <ftp://ftp.usa.qas.com/Product/EU-without-dotnet-setup.exe> (4MB)

5.2 Run installer

The image containing the .NET Framework will first extract to a new folder. The EU installer can then be executed by double clicking 'setup.exe' in the extracted folder.

The image that does not contain the .NET framework can be executed with a single double-click. The following installation dialogs will be displayed for both cases:

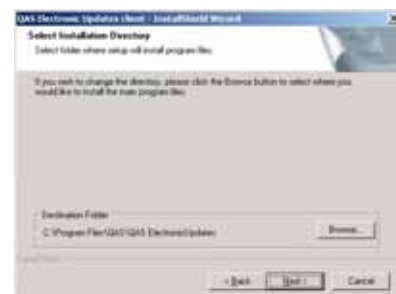
Click 'Next' to begin the installation process



Check the 'I accept the terms of the license agreement' option and click 'Next' to continue.



Click 'Next' to accept the default client installation directory. Click 'Browse...' if you wish to change the EU client installation directory.

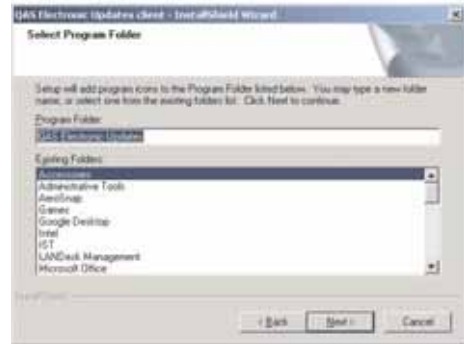


Click 'Next' to accept the default location for the downloaded data files or 'Browse...' to specify an alternative location.

NOTE: Your QAS applications will use this location moving forwards so ensure that you have adequate storage space available. This will be 6GB for full US data.



Click 'Next' to create a Program Folder to which setup will add the necessary program icons.



Check the 'Create Desktop Shortcut' option if you wish to create a desktop shortcut and click 'Next' to continue.

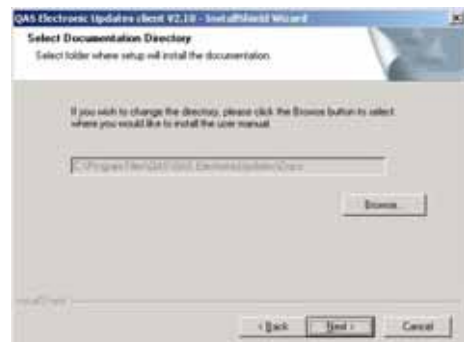
NOTE: The QAS Electronic Updates client will automatically download new versions of itself when they become available. You can uncheck this option on this screen.



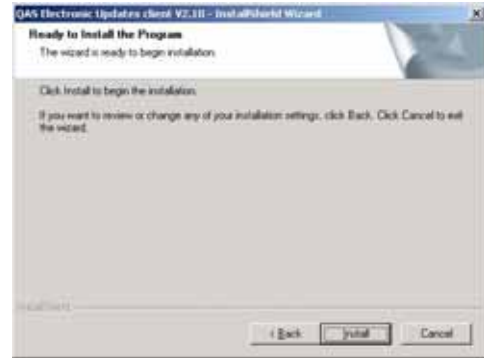
Click 'Next' to continue.



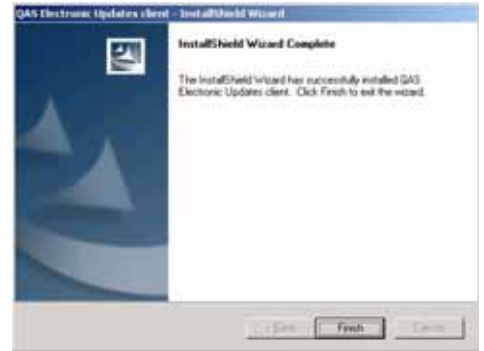
Click 'Next' to accept the default location for the downloaded data files or 'Browse...' to specify an alternative location.



Click 'Next' to begin the installation. Click 'Finish' when prompted and the EU Configuration Editor will automatically load.



Click 'Finish' to complete the installation of the QAS Electronic Updates client.



Click 'OK' to load the Configuration editor.



The QAS EU Configuration Editor should load automatically but can also be accessed via a desktop shortcut.



5.3 Choose Pull vs. Push installation method

As outlined in section 3 there are two ways to update remote QAS applications:

Option 1 – Push: An EU client can be configured to **push** data to a remote network share and apply the necessary configurations updates and activation of new data sets.

Option 2 – Pull (Windows only): An EU client can also be installed on the remote machine and be configured to which monitors the central installation of EU that is downloading data from the internet. As new data becomes available, the EU client on the remote machine can **pull** data from the central EU client and update the applications accordingly.

NOTE: Assume all instructions must be carried out for both options unless stated otherwise.

5.3.1 Get Started

- Click the 'Next' button on the bottom right hand side of the screen. The wizard will walk you through the configuration.

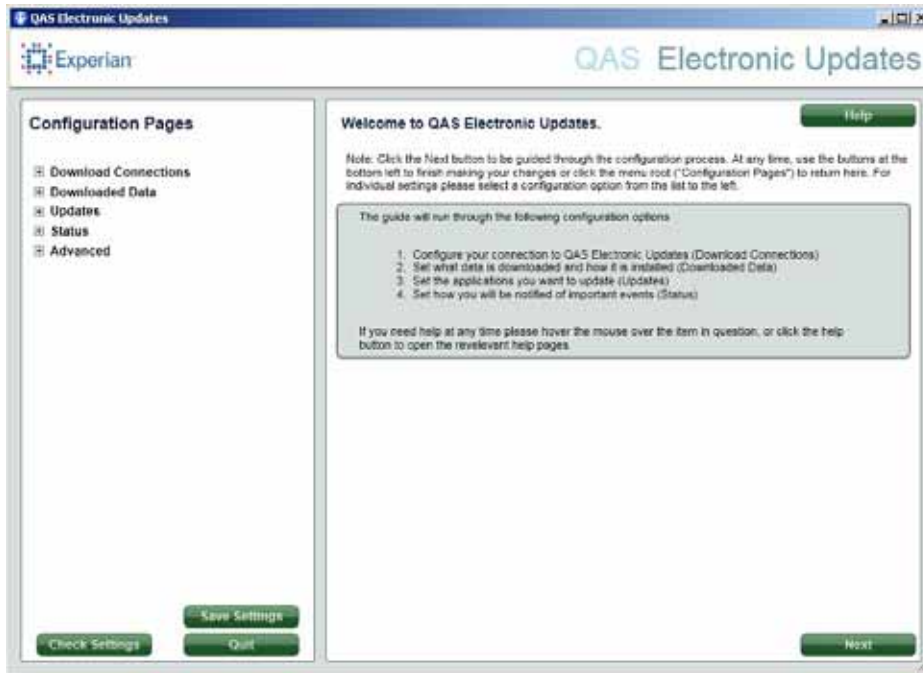


Fig. 1: Getting Started

5.3.2 Set Download Connections

- Select the 'Enable Internet download connection' tick box.

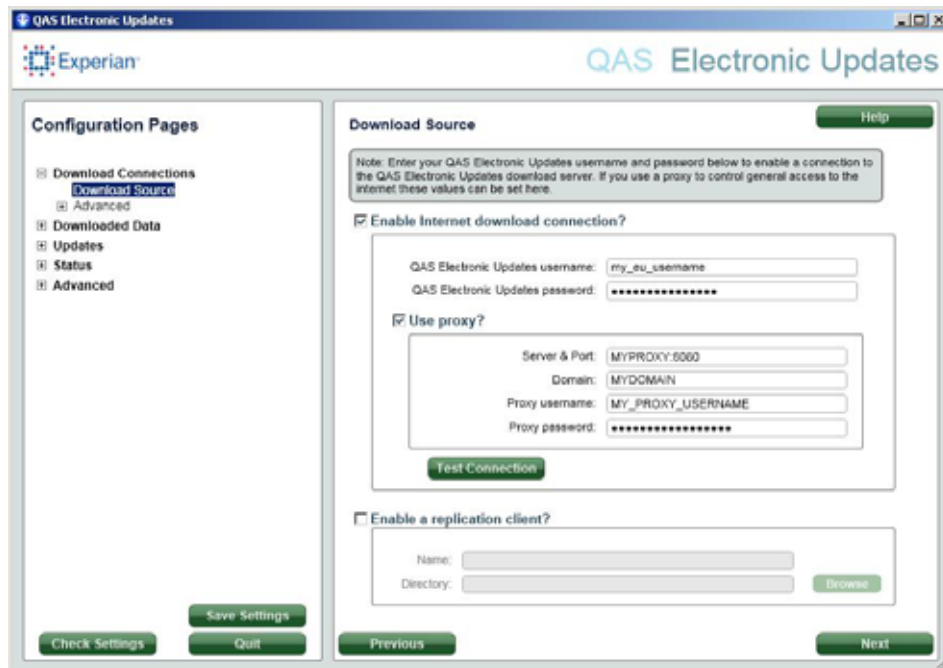


Fig. 2: Download Connections Dialog

- Enter your QAS Electronic Updates username and password.
- Enter network Proxy Server, Domain, Proxy username and Proxy password as required.
- Click the 'Test Connection' button to verify that connectivity to the Experian QAS hosted EU server is achievable.
- Click 'Next' to continue to the 'Data download and installation' screen.

5.3.2 Configure Data download and installation options

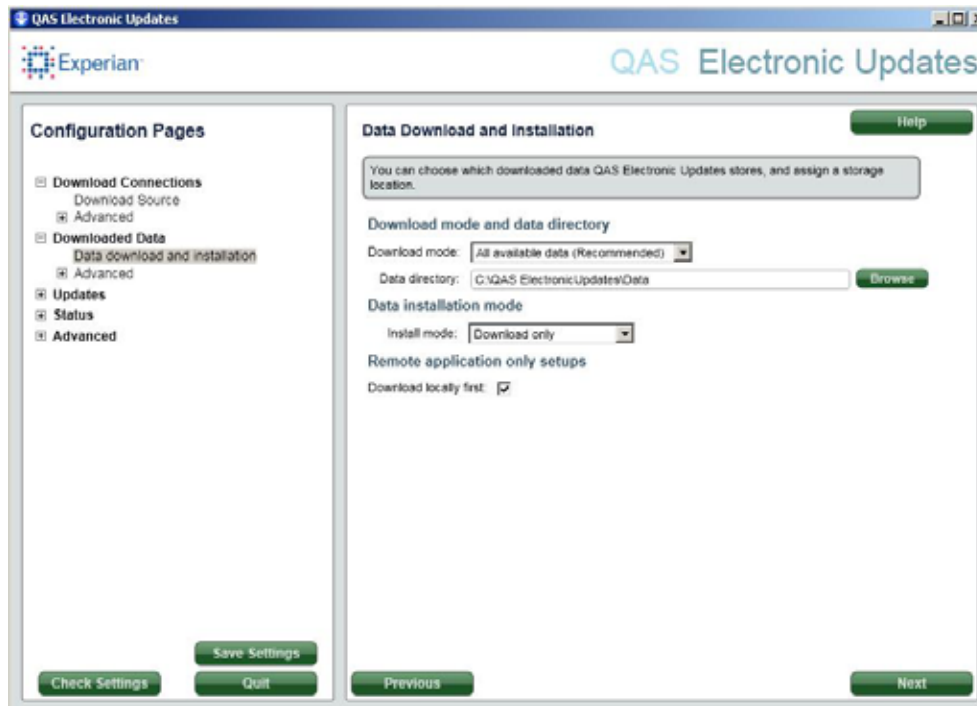


Fig. 3: Downloaded Data Dialog

- Change 'download mode' to 'All available data'. This will ensure that the EU client only downloads the necessary data sets.

NOTE: It is necessary to set the 'download mode' to 'All available data' to update any products using DPV data.

- Change the install mode to 'Full Install'. This will fully automate the data update process by downloading, installing and activating datasets as they become available.
- Expired will be purged by default. To change these settings click on 'Advanced' on the left hand side tool bar under 'Downloaded Data'. You can uncheck the 'Purge expired files' setting. If you select this dialog click back on the 'Data download and installation' menu item before continuing.
- Click 'Next' to go to the 'Data Applications to Update' screen

5.3.2.1 Configure Applications to Update (Option 1: Push only)

Instructions for configuring Option 2: Pull can be found in section 5.9

- Select the 'remote applications to update' option under the 'Updates' section on the left hand pane.

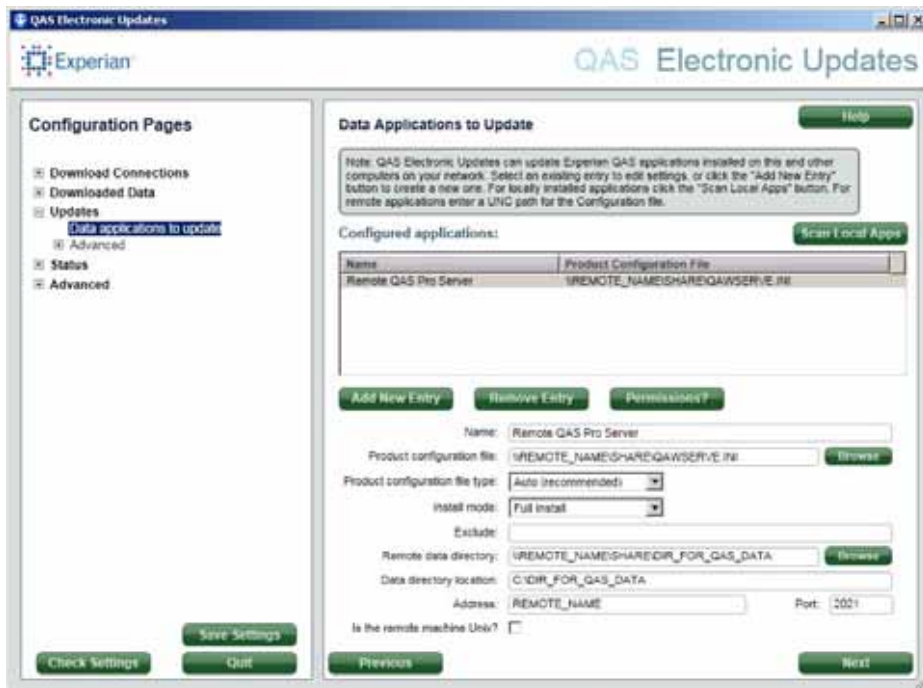


Fig. 4: Data Applications to Update

- Click the 'Add New Entry' button to create entries for a new remote application to update.
- Populate the available fields as necessary
 - o Name: Name used in the configuration to refer to that particular remote application.
 - o Product Configuration File: Full UNC path to the ini file used by the remote QAS application.
 - o Production Configuration Files Type: Keep as Auto.
 - o Install Mode: This allows automation the installation and activation of the data for this particular QAS product.
 - o Exclude: If you wish to prevent and data sets being pushed to a remote machine they can be entered in three letter form into this field in a comma separated list.
 - o Remote data directory: UNC path to the data directory on the remote QAS installation
 - o Data Directory location: The location of the data directory used by the remote QAS installation as seen on that machine. This path can be referenced by either the local drive name or the UNC share.
 - o Address: Only for Server based tools such as QAS Pro Server and QAS Pro Web. This is the host name or IP address of the machine on which the QAS application is installed
 - o Port: Only for Server based tools such as QAS Pro Server and QAS Pro Web. This is the port on which the QAS application is listening on the remote machine.
 - o Is the remote machine UNIX: for UNIX/Linux installation to ensure paths are added to the configuration files correctly (i.e. '/' vs. '\')

NOTE: Mapped drives are not supported so please ensure that you use a UNC share name where referring to file/folder locations.

5.3.3 Configure Email Notification

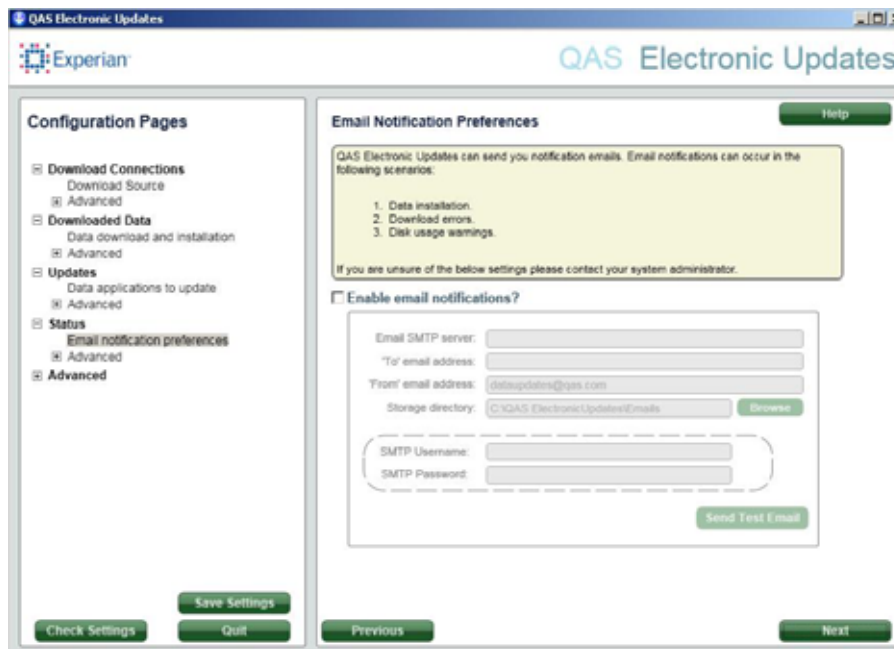


Fig. 5: Email Notification Preferences

- Check the 'enable email notifications' tick box and fill out the necessary fields to allow QAS Electronic Updates to provide email notifications of update activity. The 'To' email address should be a relevant distribution group instead of an individual.
- Click 'Send Test Email' button to confirm settings are correct.
- Click 'Save Settings' button to save the EU Client configuration settings.
- Click 'Next' to proceed to the 'Electronic Updates Service' screen.

5.3.4 Electronic Updates Service

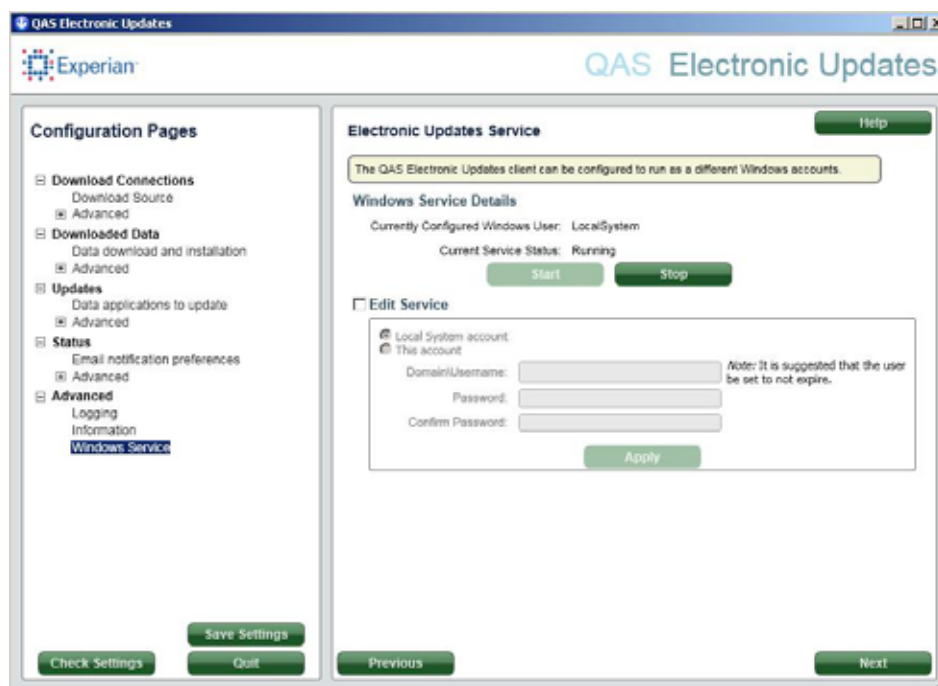


Fig. 6: Electronic Updates Service

- Click on 'Edit Service'
- Click the 'Local System account' if you wish to use this and then click 'Apply'
- If you would like to enter specific account information click 'This account' and enter username and password and then click 'Apply'.
- The service status should be running.
- Click 'Next' at the bottom right hand side of the screen.

5.3.4.1 Configuration for installation method Option 2: Pull

5.3.5 Install

- Repeat steps 5.1-5.2 to install the Electronic Updates client on the remote machine.

5.3.6 Configure remote replication client

- The configuration editor should load automatically or can be access via a desktop shortcut.
- Select the 'Download Source' under 'Download Connections'.

- Tick the tick box 'Enable a replication client' and enter a suitable name to which this replication client will be referred to as.
- Enter the full UNC path to the download directory specified in section 5.5.

NOTE: The download directory specified must be available for read access from the remote installation of the EU client.

- Repeat the following configuration sections for the remote installation of the EU Client
 - o 5.3.2: Configure Data download and installation options
 - o 5.3.3: Configure Email Notification
 - o 5.3.4: Electronic Updates Service

6. Wait for downloads to begin

Once the configuration is complete and the EU Client started, the process will check for new data updates every three hours. As the new data updates become available they will be automatically downloaded and your target applications updated.

You can monitor the status of the EU Configuration Editor in the 'View your current status' under the 'status and check' option in the left hand pane.

It is highly recommended that data expiry email notification is set up for Pro Web and QAS Pro Server. This will help warn your organization of any impending data update issues in the event that the Electronic Updates service is corrupted or stopped.

7. Contacts Page

United Kingdom and Netherlands:

Technical Support
Experian QAS
George West House
2-3 Clapham Common North Side
London
SW4 0QL

T: +44 (0) 207 498 7788
E: support@qas.com
W: www.qas.com/uk/support

USA and Canada:

Technical Support
Experian QAS
125 Summer St Ste 1910
Boston
MA 02110-1615

T: +1 (888) 712 -3332
E: us.support@qas.com
W: www.qas.com/us/support

France:

Experian QAS
Support Technique
38 AVENUE DES CHAMPS ELYSEES
75008 PARIS

T: +33 (0) 1 70 39 43 43
E: support@qas.fr
W: www.qas.fr/support

Australia, New Zealand and Singapore:

Technical Support
Experian QAS
Sydney
L 15 100 Miller St
NORTH SYDNEY NSW 2060

T: +61 2 8907 7272
E: qassupport@au.experian.com
W: www.qas.com/au/support

MELBOURNE

T: +61 3 8622 1655

E: qassupport@au.experian.com

W: www.qas.com/au/support

8. Further Details

Please refer to <http://www.qas.com/eupdates> for detailed information about EU. If you are unable to find the answer to your question on this site or have any feedback you would like to share please email [your local support office](#) or contact your Customer Account Manager.

9. Further Details

Please refer to <http://www.qas.com/eupdates> for detailed information about EU. If you are unable to find the answer to your question on this site or have any feedback you would like to share please email [your local support office](#) or contact your Customer Account Manager.