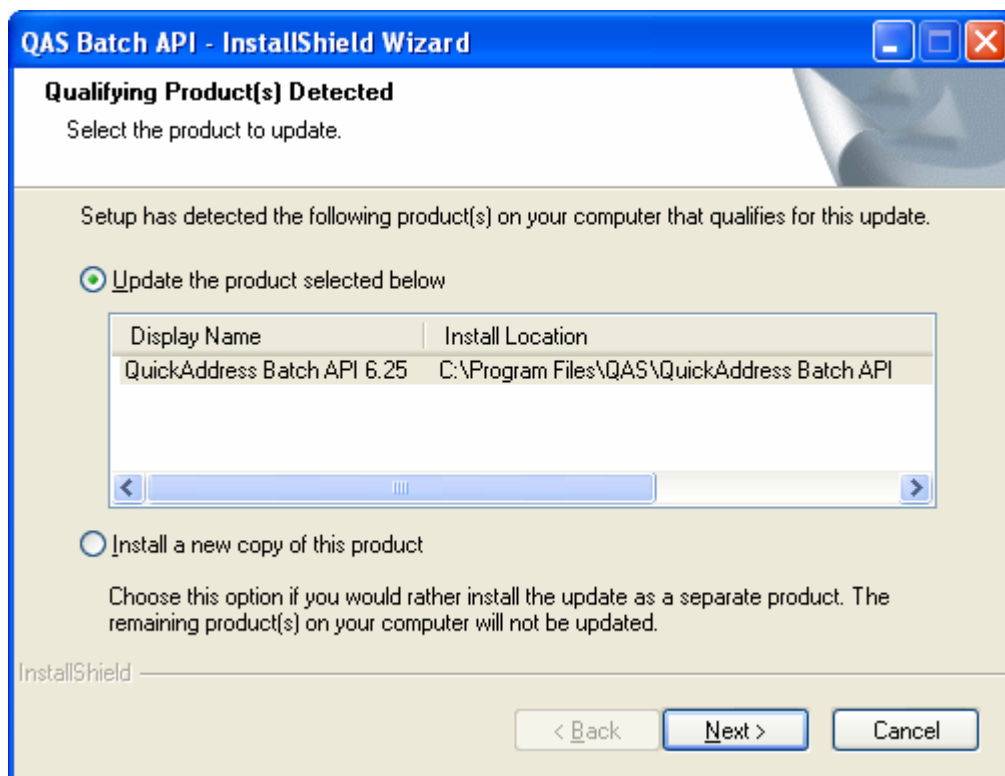


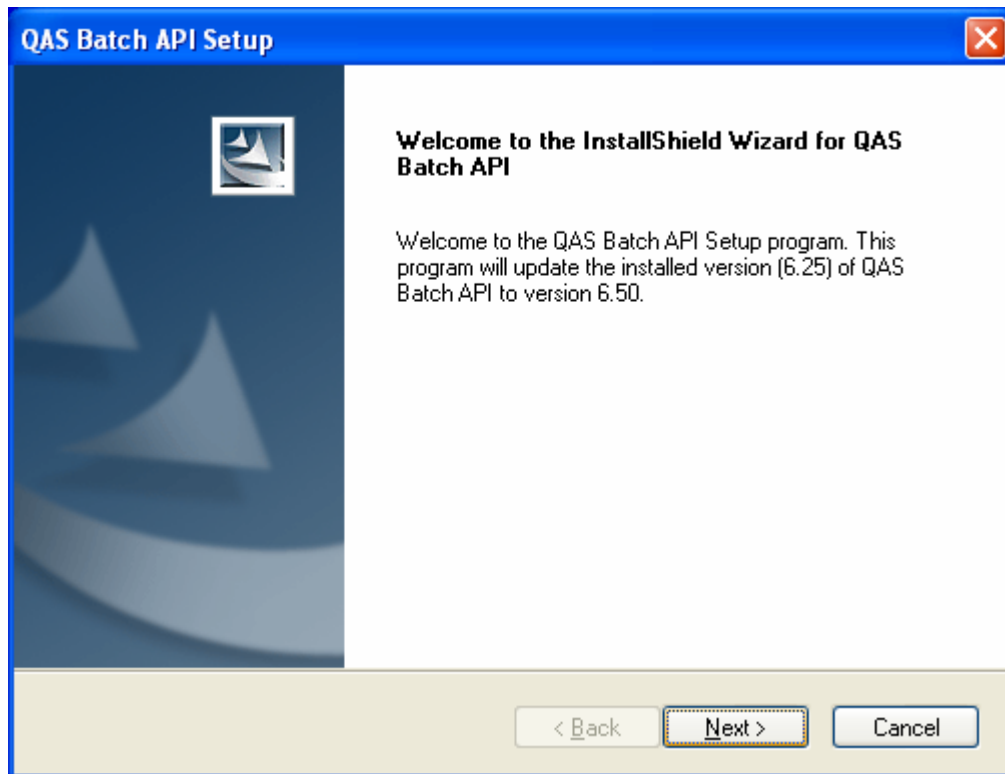
<b>Product:</b>	<b>QAS Batch 6.50</b>	<b>Version:</b>	<b>World</b>
<b>Implementation:</b>	<b>API</b>	<b>Operating System:</b>	<b>Windows</b>
<b>Last revision:</b>	<b>29/10/2008</b>	<b>Author:</b>	<b>DARIAM</b>
<b>Query:</b>	<b>How do I upgrade to Batch API WIN 6.50 from a previous 6.25 version?</b>		

### Upgrading to QAS Batch API 6.50 from 6.25

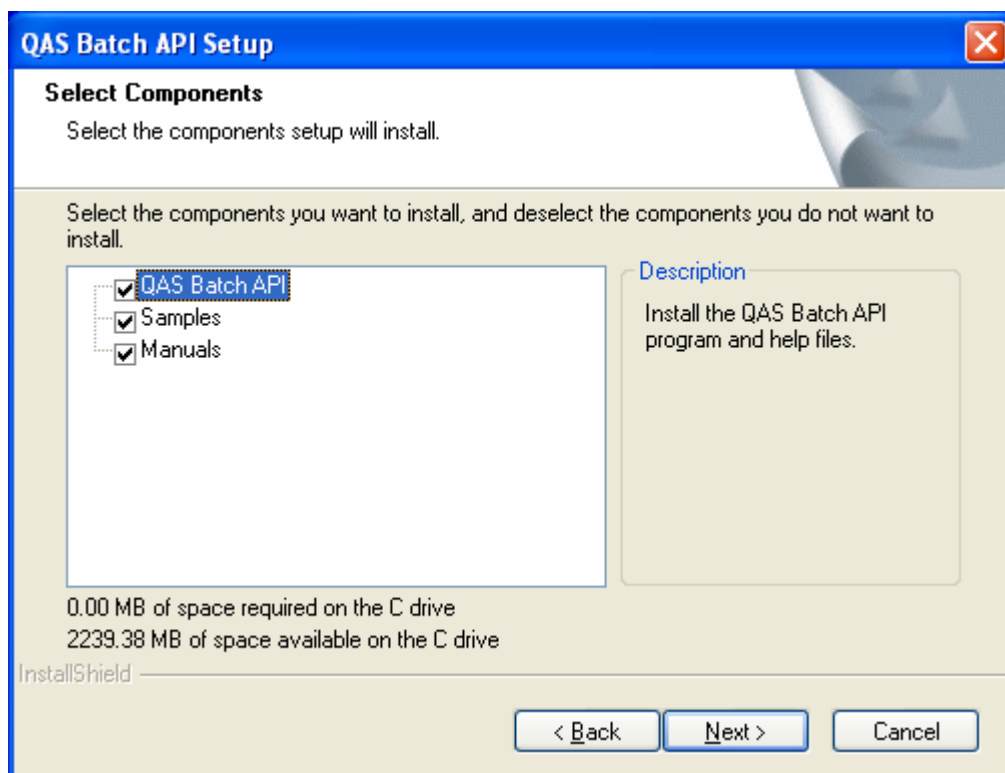
To update QAS Batch, follow these steps which will install the updated version over your existing copy, whilst retaining your current settings:

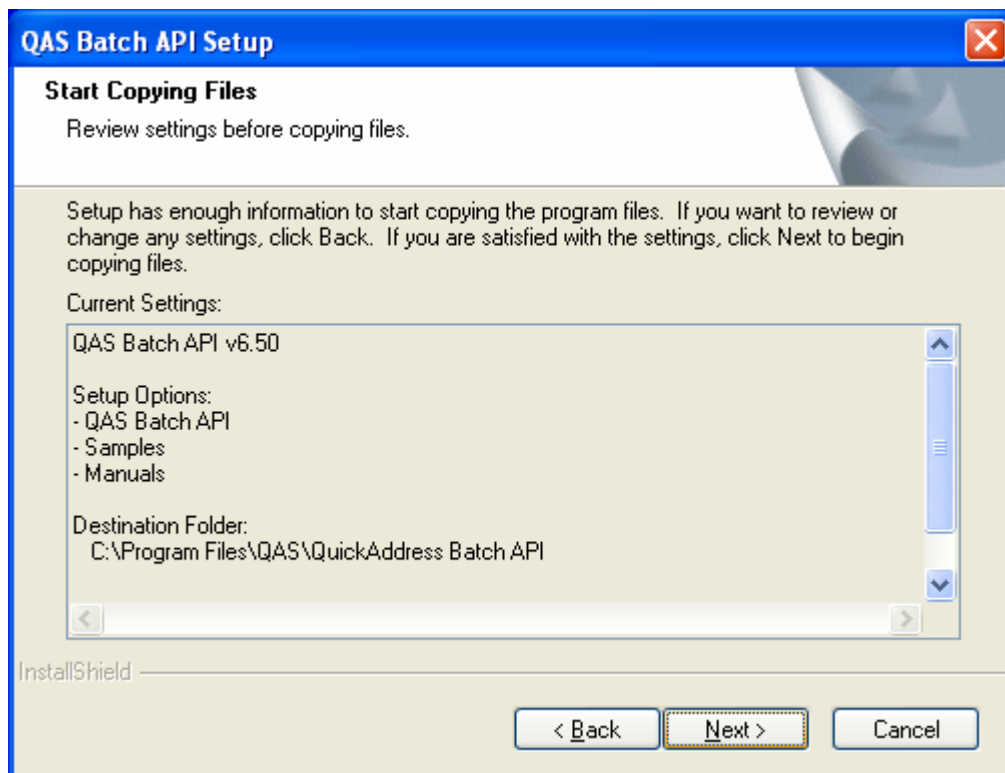
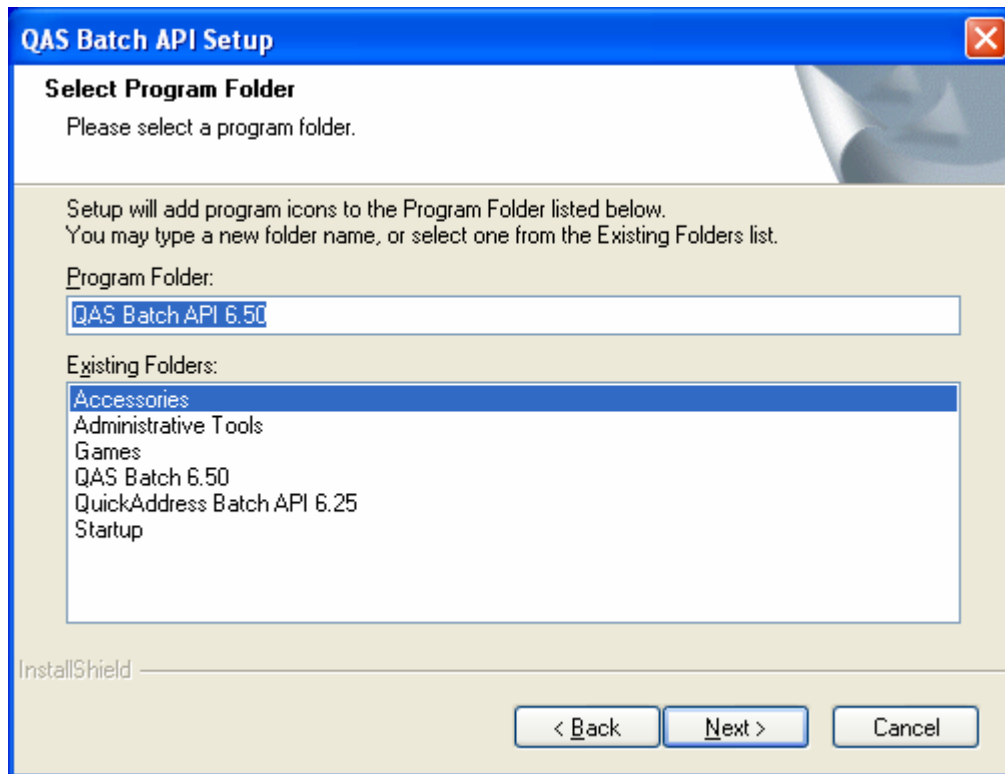
1. Insert the **QAS Batch API 6.50** CD into your CD-ROM drive.
2. The setup program should start up automatically. Otherwise, click the **Start** menu and select **Run**. In the dialog box that appears, type **d:\setup**, where **d** is the drive letter for your CDROM drive, and press **Enter**.
3. Once the installation program starts, follow the on-screen instructions to install Batch. The InstallShield should automatically detect your existing installation.



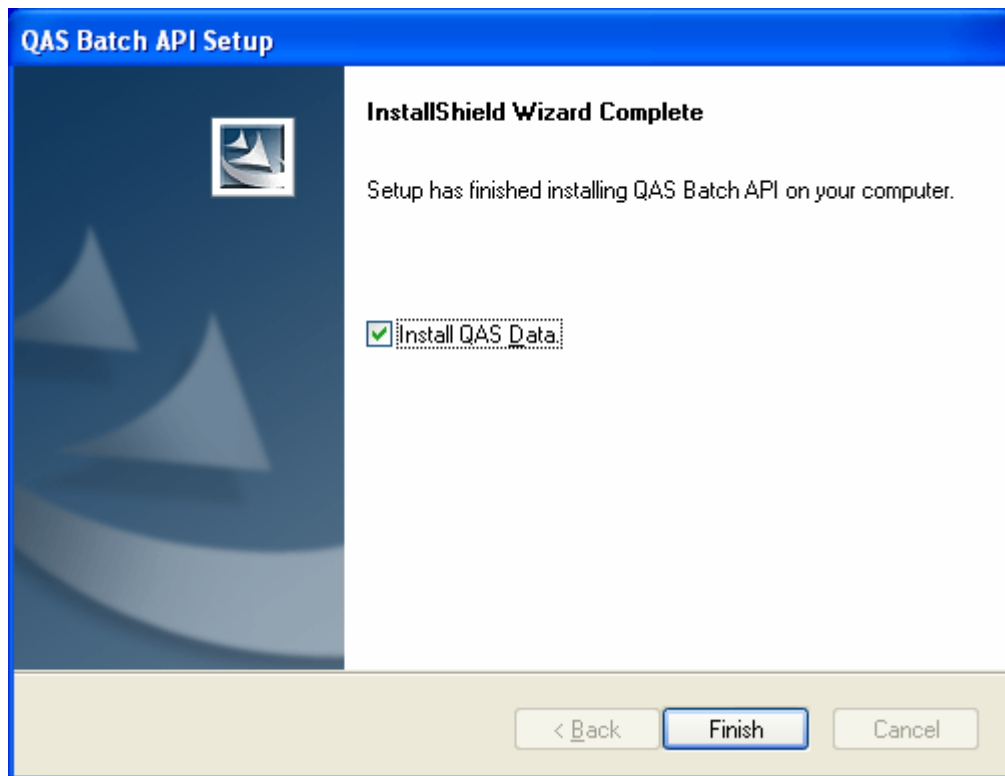


4. Select the relevant components to be installed. By default all components are selected as this is the recommend option.





5. At the end of the install the wizard will ask you if you would like to install the data.



6. Press finish and proceed with installation of the latest dataset.

**If your application expects Batch API to be in a different location you will need to copy the updated versions of the following files.**

**Note that you can retain your existing qaworld.ini, qawserve.ini and qalcn.ini to keep your layout parameters and licence key.**

### **Windows**

qabwved.dll

qabwved.rev

country.ini

qabwved.044

qalcl.dat

qaworld.ini (keep existing 6.25 file)

qawserve.ini (keep existing 6.25 file)

qalcn.ini (keep existing 6.25 file)